



# TITAN

## High Frequency On-Line Series

Uninterruptible Power Technology

The Titan series provides True-on-line Double conversion Technology to provide an independent and clean source of Power to sensitive electronic and computer equipment.

### Technology

- Employs Ultra-Fast Modern IGBT Devices for high efficiency
- Wide Input Voltage & frequency window: Generator Friendly
- Automatic Bypass Feature to Protect UPS & the load
- Cold Start Function – Can be switched with out utility supply
- Intelligent RS232 Port & Slot for SNMP or AS400 card
- Can be coupled to external battery cabinet for long standby times
- Available in Tower or Rack Format
- 6kVA and 10kVA fitted with maintenance Bypass switch



 [www.uptech.co.za](http://www.uptech.co.za)  
**UPTECH**  
Uninterruptible Power Technology

[www.uptech.co.za](http://www.uptech.co.za) • 0861 UPTECH/0861 878324



### Rackmount Configuration

The Titan range is also offered in the Rack-mount configuration, to be fitted together with rack-mount servers in space constraint server rooms.

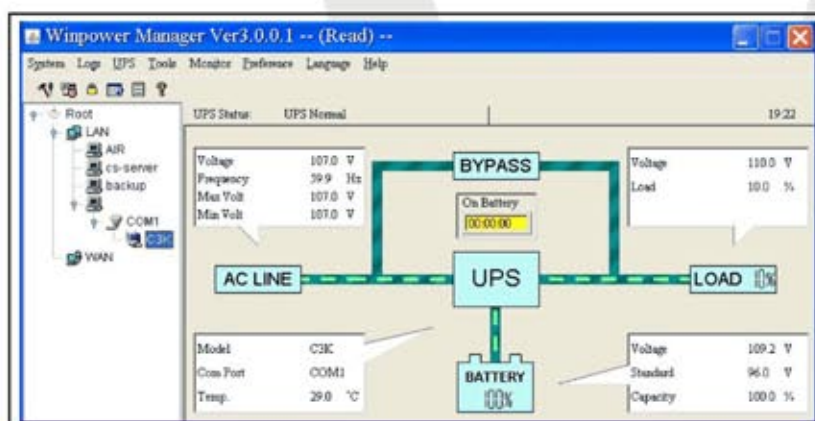
### Extended Back-up Time

The Titan Series can be connected to large battery banks to provide up-to 24 hours back-up time. In this case the internal batteries (supplied with the standard system) are replaced with a powerful two-stage 8 Amp super-charger. This charge is able to recharge a bank of depleted 102AH batteries in 6 hours.

### Communications

The Titan UPS is fitted with a RS232 port to facilitate communications with a individual PC, which is connected directly to the UPS or multiple PC's on a network. In the event of a battery low condition, the Winpower can be configured to shutdown a specific computer or all computers on a particular network.

The UPS also offers a slot, in which a SNMP or AS400 card can be inserted. When the UPS cannot be linked directly to a PC, the SNMP card allocates the UPS an IP address and the UPS can then be monitored at any point on the network. The AS400 will allocate voltage free contacts for the UPS which can then be used to activate remote alarms.



# TITAN 220/230/240V

## ON-LINE UPS SPECIFICATION

MODEL		TITAN 1K	TITAN 1KS*	TITAN 2K	TITAN 2KS*	TITAN 3K	TITAN 3KS*	TITAN 6K	TITAN 6KS*	TITAN 10K	TITAN 10KS*	
<b>CAPACITY</b>	VA/W	1000VA/700W		2000VA/1400W		3000VA/2100W		6000VA/4200W		10 000VA/7000W		
<b>INPUT</b>	Base on load percentage (100%-80%/80%-70%/70%-60%/60%-0%)											
	Voltage Range	Low Line Transfer	160VAC/140VAC/120VAC/110VAC ± 5VAC						176 ± 3%VAC			
		Low Line Comeback	170VAC ± 5VAC						185 ± 3%VAC			
		High Line Transfer	300VAC ± 5VAC						276 ± 3%VAC			
		High Line Comeback	285VAC ± 5VAC						266 ± 3%VAC			
	Frequency Range	46Hz-54Hz						46Hz-54Hz				
Phase	Single phase with ground						Single phase with ground					
Power Factor	≥0.95											
<b>OUTPUT</b>	Voltage	220VAC/230VAC/240VAC						220VAC/230VAC/240VAC				
	Voltage Regulation	± 2%						± 1%				
	Frequency (Synchronized range)	46Hz-54Hz						46Hz-54Hz				
	Frequency (Battery Mode)	50Hz ± 0.2Hz						50Hz ± 0.05Hz				
	Current Crest Ratio	3:1						3:1				
	Harmonic Distortion	Tower Case	≤3% THD (Linear Load) ≤6% THD (Non Linear Load)		≤4% THD (Linear Load) ≤7% THD (Non Linear Load)		≤2% THD (Linear Load) ≤6% THD (Non Linear Load)		N/A			
		Rack Case	≤4% THD (Linear Load) ≤7% THD (Non Linear Load)						N/A			
Output Waveform	Pure Sinewave											
<b>EFFICIENCY</b>	To AC Mode	85%		85%		88%		>88%				
	To Battery Mode	83%		83%		83%						
<b>BATTERY</b>	Tower Case	Battery Type	12V/7.2Ah	Depending on the capacity of external batteries	12V/7.2Ah	Depending on the capacity of external batteries	12V/7.2Ah	Depending on the capacity of external batteries	12V/7.2Ah	Depending on the capacity of external batteries	12V/9Ah	Depending on the capacity of external batteries
		Numbers of Batteries	3		8		8		20		20	
		Backup Time (Full Load)	>5 minutes		>9 minutes		>5 minutes		8 minutes		5 minutes	
		Recharge Time	5 hours to 90%		5 hours to 90%		5 hours to 90%		7 hours to 90%		8 hours to 90%	
		Charging Current (Max.)	1.0A		7A		1.0A		9.6A		1.0A	
	Charging Voltage	41.1Vd ± 0.6V		110Vdc ± 0.4V		274Vdc ± 0.5V						
	Rack Case	Battery Type	12V/7.2Ah	Depending on the capacity of external batteries	12V/7.2Ah	Depending on the capacity of external batteries	12V/7.2Ah	Depending on the capacity of external batteries	12V/7.2Ah	Depending on the capacity of external batteries	N/A	
		Numbers of Batteries	3		8		8		20			
		Backup Time (Full Load)	>5 minutes		>9 minutes		>5 minutes		>8 minutes			
		Charging Current (Max.)	1.0A		7A		1.0A		9.6A		1.0A	9.6A
Charging Voltage		41.1Vd ± 0.6V			110Vdc ± 0.4V		274Vdc ± 0.5V					
<b>TRANSFER TIME</b>	AC to DC	Zero										
	Inverter to Bypass	2.5ms (Typical)						Zero				
<b>INDICATOR</b>	Status	Load Level / Battery Level / AC Mode / Bypass Mode / Fault										
<b>AUDIBLE ALARM</b>	Battery Mode	Beep every 4 seconds										
	Low Battery	Beep every second										
	Overload	Beep twice every second										
	Fault	Continuous Beep										
<b>DIMENSION</b>	Tower Case (DxWxH) mm	400x145x220				460x192x340				570x260x717		
	Rack Case (DxWxH) mm	Rack LPS	482.6x450x87(w.battery)		482.6x450x87		600x482.6x132		N/A			
<b>WEIGHT</b>	Tower Case (kgs)	14 kgs	7 kgs	34.5 kgs	15 kgs	35.5 kgs	16 kgs	90 kgs	35 kgs	93 kgs	38 kgs	
	Rack Case (kgs)	16.3 kgs(w.battery)		10.3 kgs	11.5 kgs	11.2 kgs	12.3 kgs	18.3 kgs	N/A			
<b>ENVIRONMENT</b>	Operating Temperature											
	Relative Humidity	20-90% (Non-Condensing)										
	Noise Level	<45dB @ 1Meter				<50dB @ 1Meter				<55dB @ 1Meter		
<b>INTERFACE</b>	Smart RS-232	Windows 98/NT/2000/XP/2003, Linux, Sun Solaris, IBM AIX, Compaq True64, SGI IRIX, FreeBSD, HP-UX, and Mac										
	SNMP (option)	Power management from SNMP manager and web browser										